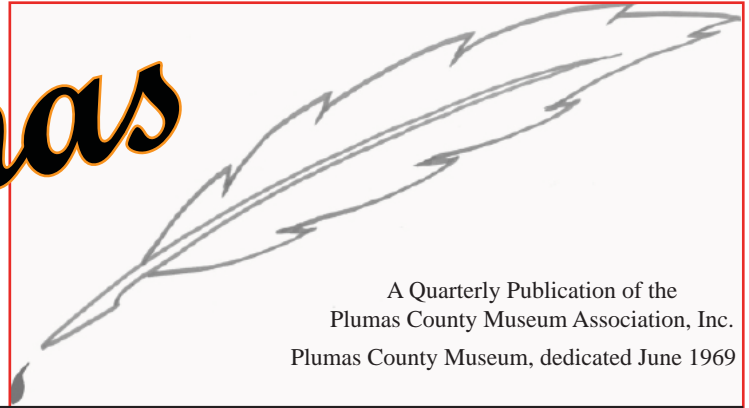


Las Plumas



A Quarterly Publication of the
Plumas County Museum Association, Inc.
Plumas County Museum, dedicated June 1969

Volume 38 No. 3

Plumas County Museum Association, Inc.
www.plumasmuseum.org

August 2012

September is Event Month for the Museum!

The Plumas County Museum is hosting three major events this September, starting on Saturday the first with a stellar performance by Cowboy Poet of the Year, Larry Maurice. Larry has spent the last twenty years as a cowboy, horse wrangler and packer in the Eastern Sierra and high deserts of Nevada. He is now a sought-after entertainer working all over California and the West. He has hosted television specials and received the coveted "Will Rogers Cowboy Award." Larry has agreed to perform at the Almanor Recreation Center at 290 Meadow Brook Loop in Chester on behalf of the Museum. The show will run from 6:30 to 8 p.m. Please be sure to mark your calendar for this exciting event and come out to support the Museum.

**PLUMAS COUNTY MUSEUM
Presents
Academy of Western Artists
"Cowboy Poet of the Year"
Larry Maurice**



Saturday - September 1, 2012 - 6:30-8:00 P.M.
Almanor Recreation Center
290 Meadow Brook Loop
Chester, CA
\$10.00 general admission
\$7.50 students and seniors
283-6320 www.plumasmuseum.org

Made possible by the generosity of Plumas County Facilities

and a grant from Poets & Writers of California

ROUGH ROAD AHEAD

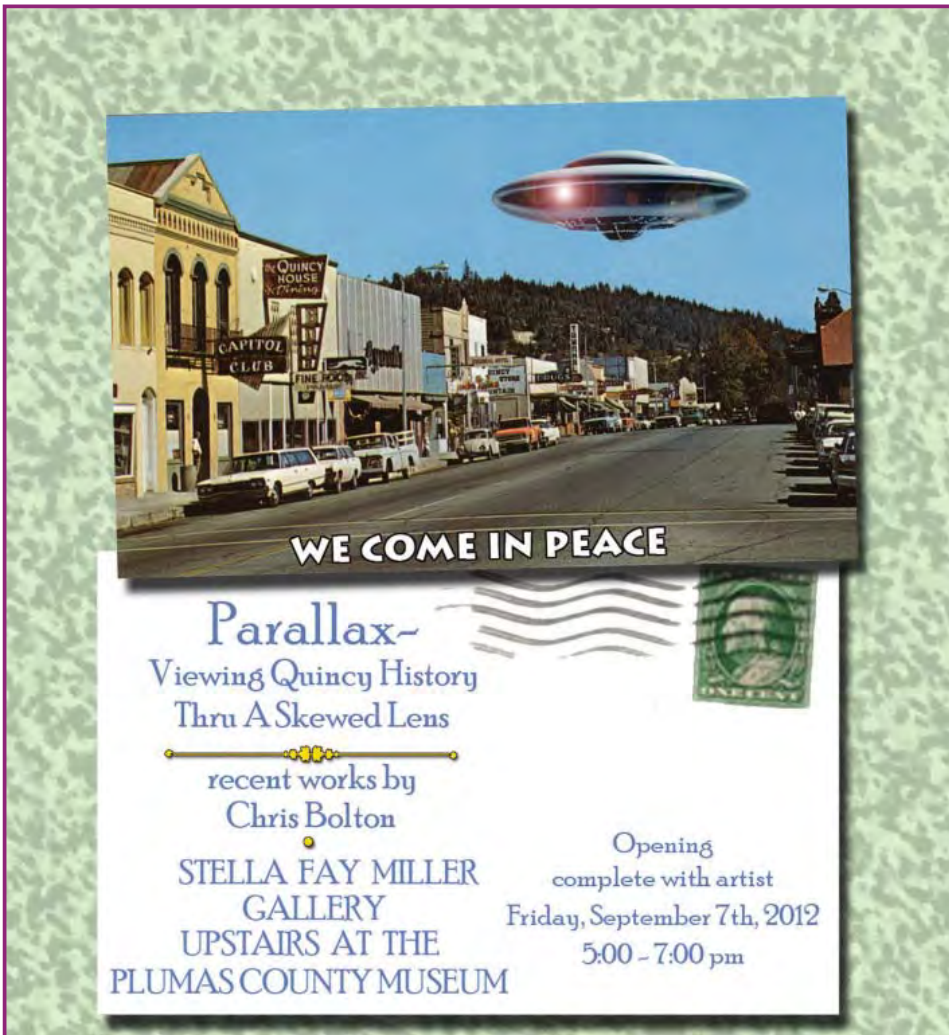
It seems as if it is nothing but bad news when it comes to money issues. The Museum has again suffered huge budget cuts from the County. This year the Director has been reduced to 36-hour weeks, the Assistant Director is at 75% and our entire Service & Supply budget has been eliminated. This last item covers our electricity, heating and cooling, security, minor repairs, office supplies, telephones, internet, water and sewer, in-county travel, archival supplies, display supplies and so forth.

We will definitely need our members' support to make it through these fiscally troubled times. The message is clear: "If the public wants to keep the County Museum, they are going to have to fund it." Of course all of you have been doing this for years, but with the County's current financial condition, there seems to be no alternative and we sincerely hope we can count on your continued support. The Museum has been serving the county's residents and visitors for over 45 years and we wish to continue to do so indefinitely.

One way to make sure you are helping is to renew your annual membership. Give us a call or email to keep your membership current.

If your dues are current, please do what you can to ensure we can keep the Plumas County Museum open by making a tax-deductible contribution. Thank you.

FANTASTIC ART SHOW & RECEPTION



On Friday, September 7, from 5 to 7 p.m., the Museum will host a reception for the opening of celebrated artist Chris Bolton's show, "*Parallax - Viewing Quincy's History Thru A Skewed Lens.*" Chris spent several years as a volunteer scanning images from the Museum's historic photograph collection and in the process conceived the idea of reworking some of these images into his perception of what really happened in Quincy over time. Chris has also generously offered to donate 100% of any proceeds from sales of his art to the Museum. Be sure to put this event on your "Must Do" list.

The Art Auction at Longboard's

was a decided success with many participants going home with wonderful treasures at bargain prices. Auctioneer Wesley Neer worked his magic on the crowd, while Longboard's Executive Chef Sean Conry and his crew provided exceptional hors d'oeuvres. The Museum would like to thank all who donated and participated in this major fund raising event.

At the Book Store

Our newest book on Plumas County history is *Illegitimi Non Carborundum* by Gregory D. Nervino in which he recounts his exciting life as a Plumas County Deputy Sheriff in the 1970s-1990s.

Also, remember, our Museum Store stocks many used books for sale at very reasonable prices! With an ever-changing selection of both fiction and non-fiction covering American and California history, Anthropology, Nature and the Outdoors, and much more, there is something here for everyone.

On Saturday, August 25, from 1 to 4 p.m. at *Epilog Books* in Quincy will be a book signing by Marti Leicester for her new offering, *The Humboldt Road*, a pictorial book on that important route stretching from Chico through Plumas County to the Nevada and Idaho mines.

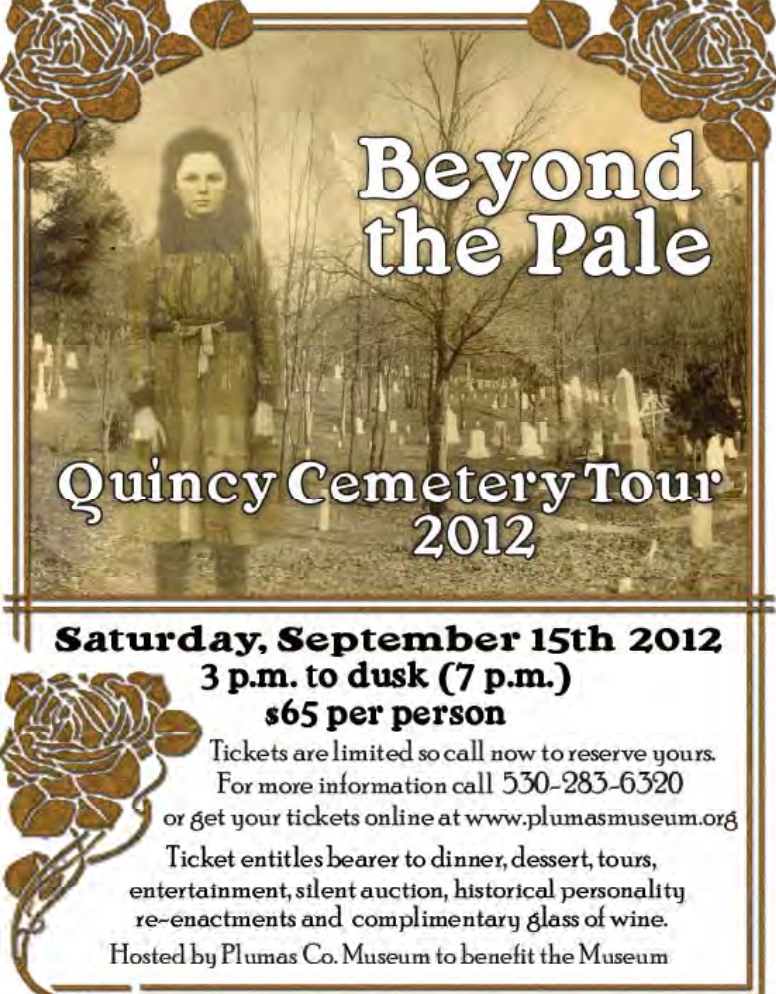
ANOTHER GRAVE OCCASION

Always sensitive to our patron's wishes, the Museum will once again host the popular "Grave Occasion" at the historic Quincy Cemetery. The event will be held Saturday, September 15, from 3 p.m. until sunset (about 7:16 p.m.)

The Ford Model A Club will be showing their vehicles, there will be music by Flywire and the Kepples, dances by Ilene Cox's Footloose Studio, and of course, the tour and performances among the headstones.

Cowboy poet Bob Fabrie will entertain during a catered dinner featuring BBQ tri-tip, chicken, side dishes, salads, homemade breads, desserts, beverages, and wine in a commemorative glass.

Notables who will make an appearance that evening include Billy "Swift Feather" Epperson, a local Maidu Indian who ran from Oroville to San Francisco to celebrate the opening of the Bay Bridge in 1936; William Wagner, owner and developer of Bucks Ranch, now Bucks Lake; Watt Maxwell, World War One vet and casualty of World War Two; Daniel Folsom, victim of a spectacular shootout on Quincy's Main Street in 1886; Florian & Christine Gansner, pioneer ranchers and sawmill owners with numerous place names for them; William Gohde, German gold miner swept to his death in a snowslide on Nelson Creek; Clarence & Leolla Schott, revered school teachers; and Stella Fay Miller, benefactress of the Plumas County Museum.



Beyond the Pale

Quincy Cemetery Tour 2012

Saturday, September 15th 2012
3 p.m. to dusk (7 p.m.)
\$65 per person

Tickets are limited so call now to reserve yours.
For more information call 530-283-6320
or get your tickets online at www.plumasmuseum.org

Ticket entitles bearer to dinner, dessert, tours, entertainment, silent auction, historical personality re-enactments and complimentary glass of wine.
Hosted by Plumas Co. Museum to benefit the Museum

Check us out on Facebook for current Museum news.

Docent & Volunteer Appreciation

We would like to thank all of our docents and volunteers who are pitching in to help keep the Museum one of the premier destinations in Plumas County. Volunteers who staffed the Peppard Cabin and Pioneer School at the Plumas County Fair were: Marilyn Bergum, Christine Camacho, Ann Castaldini, Eldora Duniphin, Betty Folchi, Carla Hamilton, Diane Lawson, Carol Paoli, Kathy Powers, Helen Roberti, Denise Russell, Norberta Schmidt, and Elsa & Jerry Thomas. Jo Ann Filippi, Lisa Hopman, Al Klem, and Carol Paoli work in our archival records helping with public inquiries. Domonick Bell, Patrick Carver, Ken Green, and Sally Nichol have been keeping up the grounds and outdoor exhibits, while Ann Castaldini, Kate DiCarlo, Melissa Kroeker, Kathy Powers, Denise Russell, and Terri Simon-Jackson provide tours of the Variel Home on Saturdays. Thank you to all of our great helpers!

2012 EXHIBITS ON THE STELLA FAY MILLER MEZZANINE

January: Malcolm Parkhurst, aka Xan - H2ommmmm
February: Christine Lillard - Drawings
March & April: Carole Jackson - Photography: *People & Places of Plumas County*
May & June: Harry Reeves & Linda Blum - Mixed Media: *Wings, Water, Wildflowers*
July & August: Willie Hyman - *Fine Arts Photography*
September & October: Chris Bolton - Parallax-Viewing Local History Through a Skewed Lens
November & December: Joe Willis - Photography, Drawings: *Seldom Seen Delights*

Hours: Tuesday - Friday 10:00 - 4:00, closed Sunday, Monday, holidays.

TRUSTEES:

Ken Barnard, Graeagle
Charlie Brown, Quincy
Don Clark, Graeagle
Bob Darling, Graeagle
Pete Dryer, Twain
Bob Edwards, Quincy
Betty Folchi, Portola
Jerry Holland, American Valley
Sandra Lee, Quincy
Gaye Porter, Quincy
Jerry Thomas, American Valley
Diane Uchtyl, American Valley

DIRECTORS:

Tandy Bozeman, Chester
Doug Ely, Quincy
Norman Lamb, Greenville
Helen Roberti, Beckwourth
William Tantau, Clio

STAFF:

Scott Lawson, Executive Director
Paul Russell, Assistant Director

Please check your mailing label for your membership EXPIRATION DATE. Due to increased printing and postage costs, we cannot send newsletters to non-renewing members.

Individual \$25, Family \$35, Patron \$100, Sustaining \$1000, Corporate \$150
Please mail check to Plumas County Museum, 500 Jackson Street, Quincy, CA 95971

If you would like to receive your newsletter by email, please let us know at pcmuseum@digitalpath.net.

Plumas County Museum Association, Inc.
500 Jackson Street
Quincy, CA 95971
www.plumasmuseum.org

Non-Profit Org.
U.S. Postage
PAID
Quincy, CA
Permit No. 38

IDENTIFICATION STATEMENT
Plumas County Museum Association Newsletter
Plumas County Museum Association, Inc.
500 Jackson Street, Quincy, CA 95971
A quarterly issue (4 times per year)
Subscription is by membership
Issue date: August 2012
ISSN: None
Vol. 38, No.3
www.plumasmuseum.org

ADDRESS CORRECTION REQUESTED